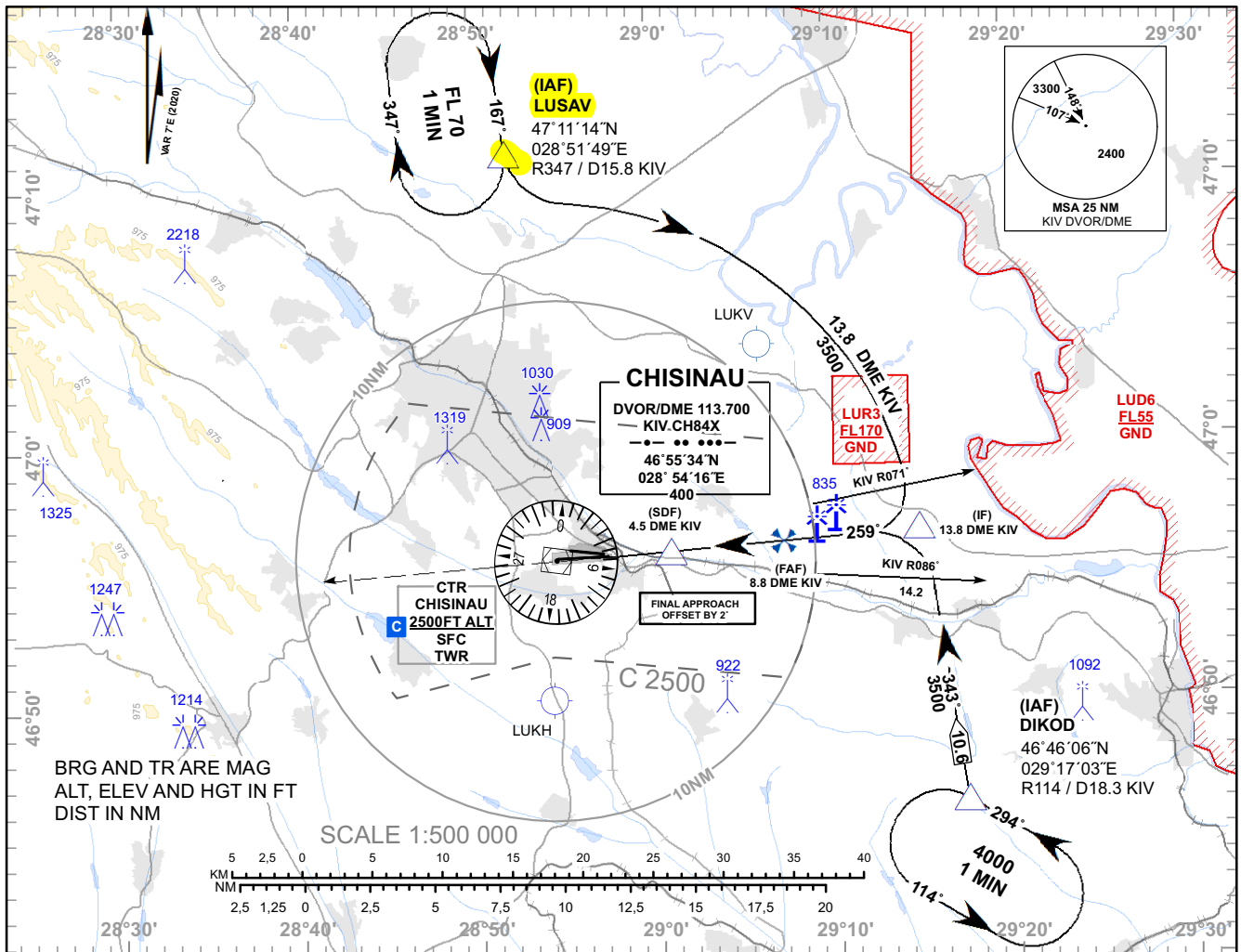


**INSTRUMENT APPROACH
CHART - ICAO**

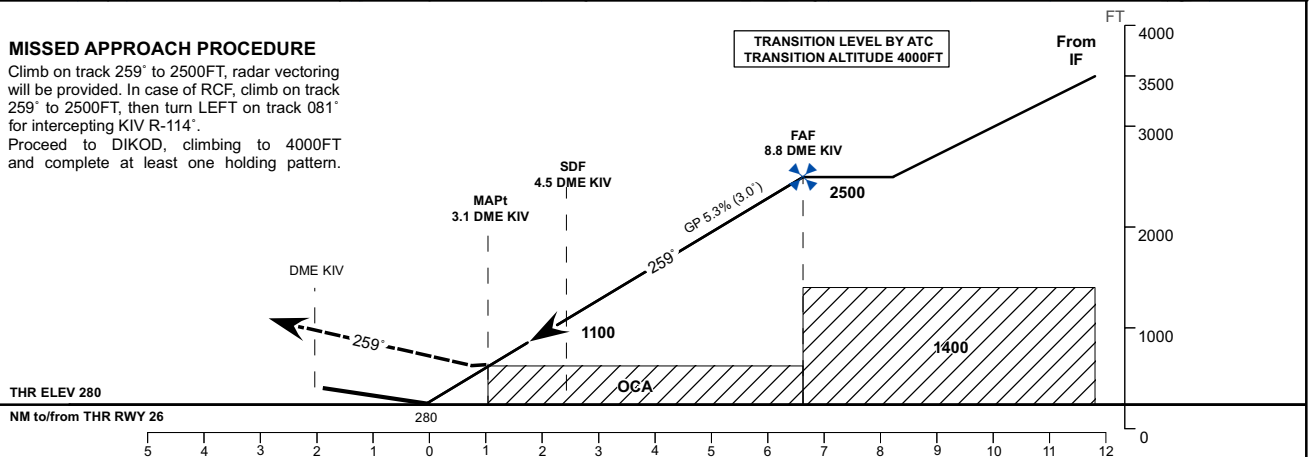
 AD ELEV 399 FT
 HEIGHTS RELATED TO
 THR RWY 26 ELEV 280 FT

 APP: 133.300 MHz
 TWR: 118.100 MHz
 ATIS: 125.225 MHz

**CHISINAU/Intl (LUKK)
VOR/DME RWY 26**

MISSSED APPROACH PROCEDURE

Climb on track 259° to 2500FT, radar vectoring will be provided. In case of RCF, climb on track 259° to 2500FT, then turn LEFT on track 081° for intercepting KIV R-114°.

Proceed to DIKOD, climbing to 4000FT and complete at least one holding pattern.

 TRANSITION LEVEL BY ATC
 TRANSITION ALTITUDE 4000FT


OCA (OCH)	A	B	C	D
DVOR/DME	690 (410)			

DME KIV	9	8	7	6	5	4	3
DIST THR	6.9	5.9	4.9	3.9	2.9	1.9	0.9
ALTITUDE (Height)	2500 (2220)	2229 (1949)	1907 (1627)	1585 (1305)	1264 (984)	942 (662)	620 (340)

Timing not Authorized for Defining the MAPt

GS	kt	80	100	120	140	160	180
DISTANCE FAF- MAPt 5.8NM	MIN:SEC	4:21	3:29	2:54	2:29	2:11	1:56
Rate of Descent (5.3%)	FT/MIN	429	536	643	750	858	965

Changes: Tables Rate of Descent and Altitude Corrected.

**INSTRUMENT APPROACH
CHART - ICAO**

**CHISINAU/IntI (LUKK)
VOR/DME RWY 26**

AERONAUTICAL DATA TABULATION				
POINT	LATITUDE	LONGITUDE	BEARING GEO° (MAG°)	DISTANCE (NM)
IAF LUSAV	471114.0N	0285149.0E	354.00° (347°) KIV	15.80 KIV
IAF DIKOD	464606.0N	0291703.0E	121.00° (114°) KIV	18.28 KIV
IF	465629.7N	0291422.7E	266.33° (259°) KIV	13.81 DME KIV
FAF	465609.8N	0290705.8E	266.33° (259°) KIV	8.81 DME KIV
SDF	465552.2N	0290045.7E	266.33° (259°) KIV	4.46 DME KIV
MAPt	465546.4N	0285843.5E	266.33° (259°) KIV	3.06 DME KIV
Final approach descent angle: 3.04°				